



# MONTHLY MEMBERSHIP PROGRESS REPORT

District 27 D2

Results as of: 03/31/2019

GMT: OPEN

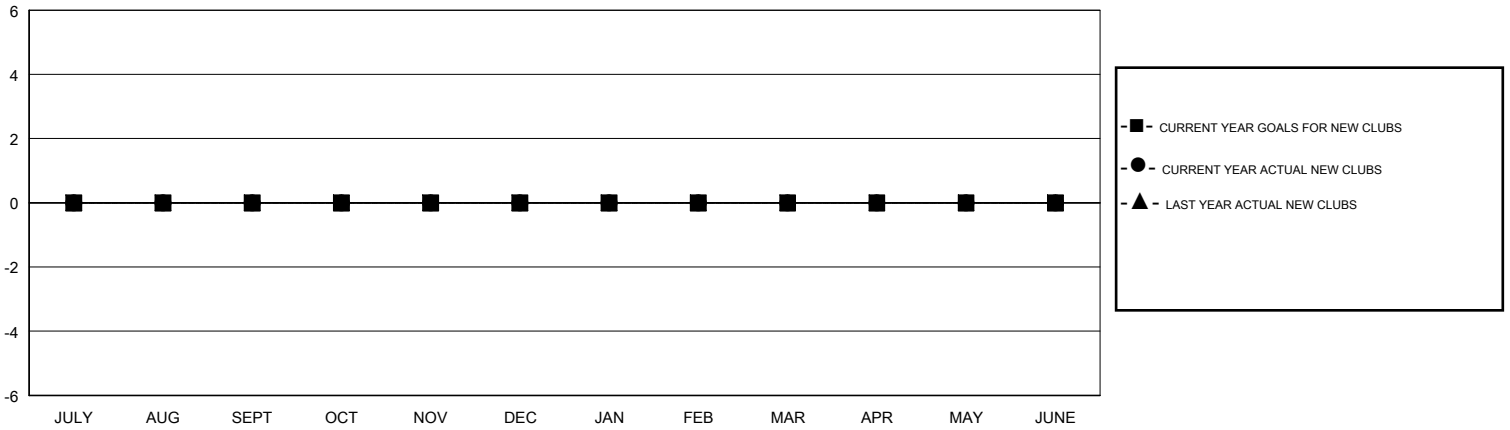
LOCATION WISCONSIN

GMT CA

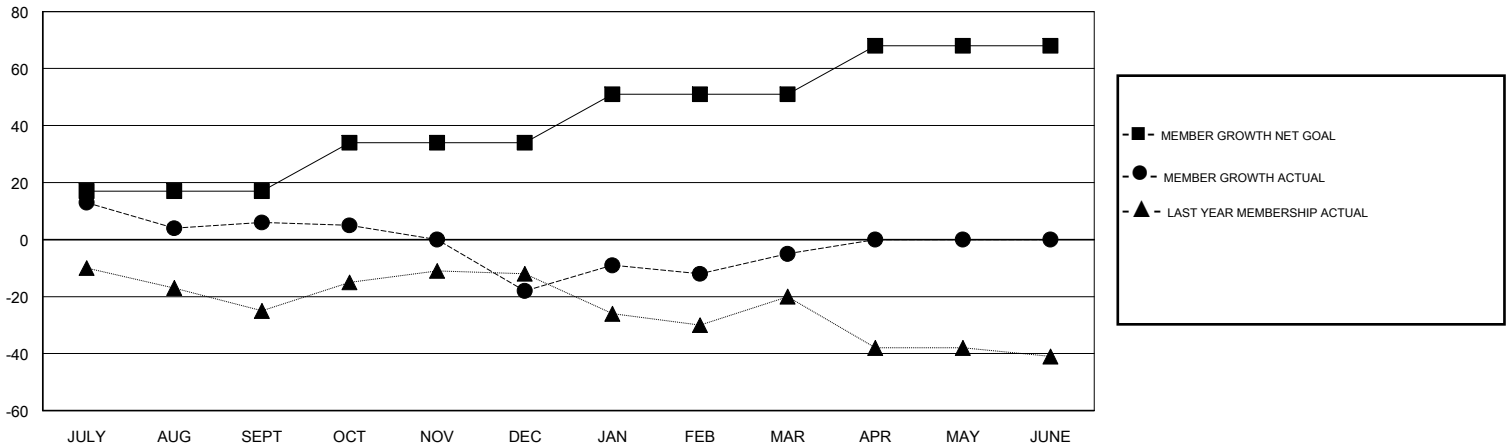
Clubs			
RESULTS FOR 2018-2019			
QUARTER	NEW CLUB GOAL	NEW CLUBS	DROPPED CLUBS
JULY/AUG/SEPT	0	0	0
OCT/NOV/DEC	0	0	1
JAN/FEB/MAR	0	0	0
APR/MAY/JUNE	0	0	0

Members			
RESULTS FOR 2018-2019			
QUARTER	MEMBER GROWTH NET GOAL	MEMBER GROWTH ACTUAL	DROPPED MEMBERS ACTUAL (including transfers)
JULY/AUG/SEPT	17	55	41
OCT/NOV/DEC	17	30	54
JAN/FEB/MAR	17	53	35
APR/MAY/JUNE	17	0	0

GOALS AND ACTUAL NEW CLUBS CUMULATIVE



GOALS AND ACTUAL MEMBERS CUMULATIVE



DROPPED CLUBS: 1	35 CLUBS OF 49 ADDED 1 OR MORE NEW MEMBERS	<u>GENDER DISTRIBUTION</u>	
DROPPED MEMBERS		MALE	1,217 (73.94%)
DECEASED	15	FEMALE	429 (26.06%)
CLUB CANCELLED	7	Women Percentage Fiscal Year Goal: 25%	
OTHER	108	TOTAL FAMILY UNIT MEMBERS	367
TOTAL	130	FAMILY MEMBERS PAYING HALF DUES	188

[CLICK HERE FOR CUMULATIVE MEMBERSHIP DATA](#)